



The Pippin , Calne, SN11 8RN

- Secure online bidding sale
- Modern 2023-built apartment
- Located in The Pippin, Calne
 - Close to local amenities
- Great investment opportunity
- Starting bid £195,000
- Spacious 797 sq ft layout
- Contemporary apartment style
 - Ideal for first-time buyers
- Viewing highly recommended

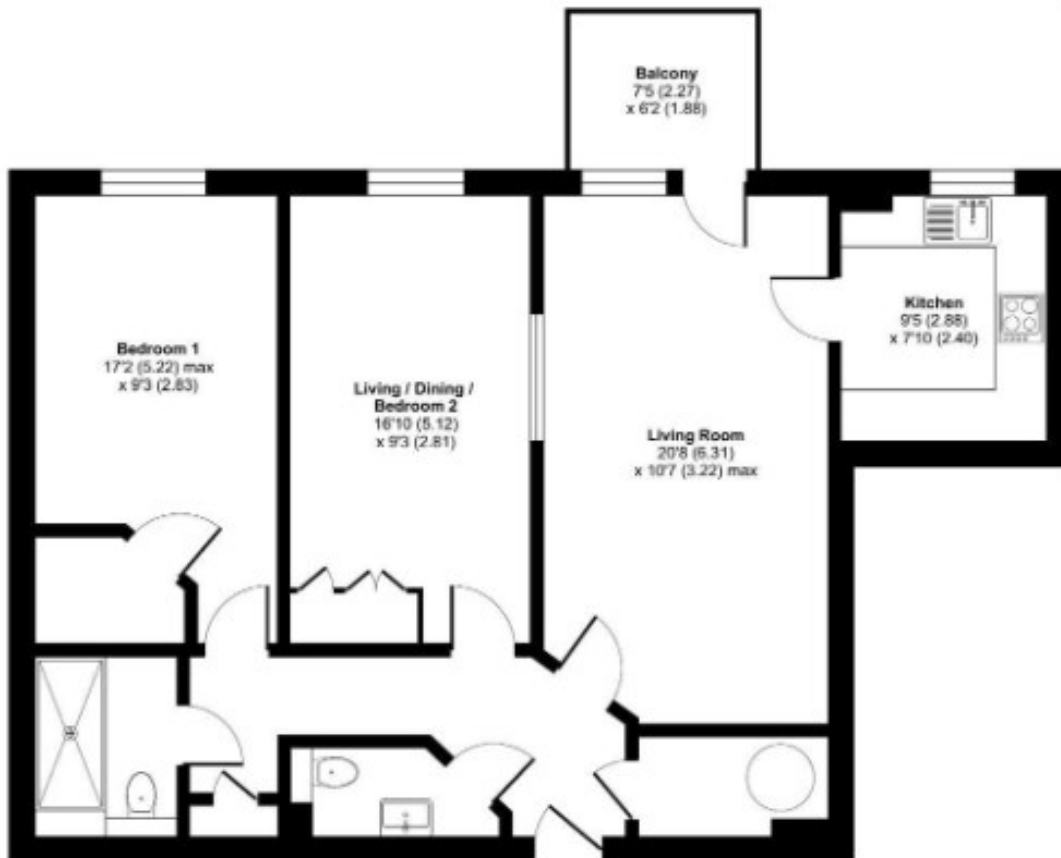


Local Authority
Council Tax Band **C**
EPC Rating **B**



Approximate Area = 828 sq ft / 76.9 sq m

For identification only - Not to scale



Smartsale4u Office

Suite 331 Kemp House, 152-160 City
Road, London, EC1V 2NX

Contact

0204 572 9091
info@smartsale4u.co.uk
smartsale4u.co.uk

Agents Note: Whilst every care has been taken to prepare these particulars, they are for guidance purposes only. All measurements are approximate and for general guidance purposes only and whilst every care has been taken to ensure accuracy, they should not be relied upon and potential buyers/tenants are advised to recheck the measurements.